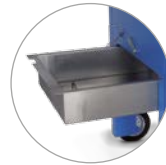


MASONRY SAW

TME700★★★

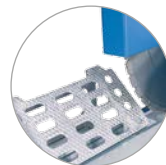
Cutting depth up to 270 mm



Removable water tank for easier cleaning.



Sturdy, balanced transport hook for easy crane transport.



Precise mitre cutting thanks to mitre stop.

The TME700*** convinces through maximum stability and robustness. The precise stainless-steel saw table guide guarantees a clean cut. Construction-site suitable leading pulleys, forklift guides and a crane hook ensure trouble-free transport.

The anti-contamination positioning of the water pump reduces servicing requirements to a minimum and ensures permanent tool cooling. The intelligent blade guard construction enables quick and easy blade installation.

System & Accessories

Technical data

Saw blade	
Max. cutting depth	270 mm
Max. saw blade Ø	700 mm
Cutting length	600 mm
Saw blade speed	1380 rpm
Saw blade holder Ø	60 mm
Carrier Ø	11.5 mm
Reference circle Ø	120 mm

Drive

Drive/motor	Electric
Output	5.5 kW
Standard voltage/frequency	400 V / 50 Hz
Engine cooling	Air cooling
Saw blade drive	Direct

Design

Infinitely adjustable cutting depths
Angle cutting function (angle stop)
Mitre cutting function (optional mitre stop)
Transport hook and fork lift guides
Pull-out water tank
Electric water pump

Dimensions & Weight

Length	1470 mm
Width	910 mm
Height	1350 mm
Weight	220 kg

System & Accessories

Masonry saw TME700***	
10989600	Masonry saw TME700*** / 400 V
Accessories	
10978735	Mitre stop (Jolly table)